

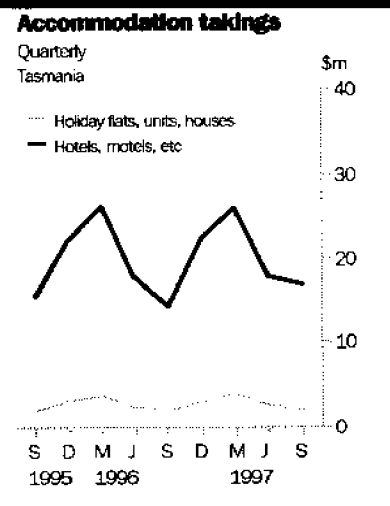
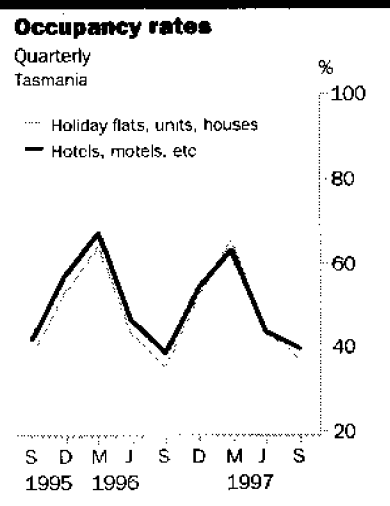


TOURIST ACCOMMODATION

TASMANIA

EMBARGO: 11:30AM (CANBERRA TIME) FRI 12 DEC 1997

SEPTEMBER QTR KEY FIGURES



	Sep Qtr 96	Sep Qtr 97	change
--	------------	------------	--------

Hotels, motels and guest houses			
Rooms available (no.)	5 604	5 763	2.8 %
Room occupancy rate (%)	38.7	39.5	0.8 pts
Takings from accommodation (\$'000)	14 362	16 727	16.5 %
Holiday flats, units and houses			
Units, etc. available (no.)	858	916	6.8 %
Unit occupancy rate (%)	35.5	37.1	1.6 pts
Takings from accommodation (\$'000)	1 922	2 087	8.6 %
Caravan parks			
Sites, cabins, etc. available (no.)	6 491	6 475	-0.2 %
Site occupancy rate (%)	28.3	29.4	1.1 pts
Takings from accommodation (\$'000)	1 209	1 413	16.9 %
Visitor hostels			
Bed spaces available (no.)	2 096	2 040	-2.7 %
Bed occupancy rate (%)	9.2	8.5	-0.7 pts
Takings from accommodation (\$'000)	207	191	-7.7 %

SEPTEMBER QTR KEY POINTS

DEMAND AND OCCUPANCY RATES MOSTLY UP

- Demand for accommodation in terms of room nights occupied in hotels, motels and guest houses rose by 5.0% while rooms available increased by 2.8% in September quarter 1997 compared with September quarter 1996. The room occupancy rate rose from 38.7% to 39.5%.
- Similarly, unit nights occupied in holiday flats, units and houses rose by 11.6% compared with a supply increase of 6.8%, resulting in an occupancy rate rise from 35.5% to 37.1%. Caravan park capacity available decreased marginally while demand increased and the site occupancy rate rose from 28.3% to 29.4%.
- Conversely, guest nights in visitor hostels fell by 10.5% while bedspaces available fell by 2.7% and the bed occupancy rate fell from 9.2% to 8.5%.

ACCOMMODATION TAKINGS INCREASE

- Accommodation takings increased substantially for each accommodation type other than visitor hostels.

INQUIRIES

▪ For further information about these and related statistics, contact Jennifer Cox on 07 3222 6148, or any ABS Office.

NOTES

FORTHCOMING ISSUES

ISSUE (Quarter)

EXPECTED RELEASE DATE

December 1997

13 March 1998

CHANGES TO THE SURVEY AND CESSATION OF STATE PUBLICATIONS

As a result of budget cuts to the ABS, the Survey of Tourist Accommodation (STA) will be significantly cut back from the March quarter 1998. The State and Territory *Tourist Accommodation* publications (Catalogue Nos. 8635.1 to 8635.8) will be discontinued because of the changes to the Survey of Tourist Accommodation which will be implemented from the March quarter 1998. The December quarter 1997 issues will be the last. There will also be changes to the publication *Tourist Accommodation, Australia* (Catalogue No. 8635.0) which will no longer contain data on caravan parks, holiday flats, units and houses and visitor hostels. However, it will include serviced apartments as a separate category and will contain State and some regional data.

The ABS has consulted with a number of interested users to determine the future form of the STA. As a result, the future collection strategy for the STA will consist of three major components.

The first component of the STA strategy is an ongoing quarterly survey with a scope of hotels, motels and guest houses with facilities in most rooms, and serviced apartments. Establishments with fewer than 15 rooms or units will be excluded. The first release of this data will be in *Tourist Accommodation, Australia* (8635.0) in June 1998 representing data for the March quarter of that year. This publication will contain some regional data as well as data for States, Territories and Australia. Further small geographic area data may be available on request. A charge may be made for this information.

The second component of the strategy is a triennial limited scope collection of significant caravan parks, visitor hostels and remaining holiday flats, units and houses, commencing with a year 2000 reference year.

The third STA component is the compilation and dissemination of annual accommodation counts of number of establishments and capacity data in respect of the current scope of the STA which is:

- hotels, motels and guest houses with facilities with 5 or more rooms,
- holiday flats, units and houses which are operated by owners, managers or real estate agents who have sole letting rights to at least 5 flats, units or houses for short term letting,
- caravan parks, and
- visitor hostels.

The counts are expected to be published in the December quarter issue of *Tourism Indicators, Australia* (Catalogue No. 8634.0).

If you have any queries about the content of these publications, please contact Debra McDonald on telephone: 07-3222-6118, fax: 07-3222-6284 or Internet: debra.mcdonald@abs.gov.au. For any queries about your subscriptions, please call the Subscription Services Freecall hotline on 1300 366 323.

Denis W. Rogers
Regional Director, Tasmania

TABLE 1 — SUMMARY OF HOTELS, MOTELS AND GUEST HOUSES WITH FACILITIES, TASMANIA

Particulars	Unit	Quarter ended				Year ended			
		June 1996	September 1996	December 1996	March 1997	June 1997	September 1997	September 1996	September 1997
LICENSED HOTELS WITH FACILITIES									
Establishments	no.	92	92	91	91	97	97
Guest rooms	no.	3,582	3,510	3,532	3,498	3,532	3,517
Bed spaces	no.	10,015	9,817	9,860	9,733	9,823	9,812
Employment (persons)	no.	3,495	3,475	3,671	3,655	3,357	3,266
Room nights occupied	no.	149,879	129,619	175,395	191,887	139,758	130,313	677,529	637,353
Room occupancy rate	per cent	46.1	40.1	54.0	61.0	43.5	40.3	52.1	49.6
Guest nights	no.	242,777	202,198	290,642	335,286	225,646	208,539	1,125,488	1,060,113
Bed occupancy rate	per cent	26.7	22.4	32.0	38.3	25.2	23.1	31.0	29.6
Guest arrivals	no.	127,544	109,504	156,629	181,994	124,878	109,726	605,056	573,227
Average length of stay	days	1.9	1.8	1.9	1.8	1.8	1.9	1.9	1.8
Takings from accommodation	\$'000	12,129	9,784	14,941	16,489	11,817	11,285	54,661	54,533
MOTELS AND GUEST HOUSES WITH FACILITIES									
Establishments	no.	88	96	96	98	100	115
Guest rooms	no.	1,941	2,094	2,072	2,113	2,105	2,246
Bed spaces	no.	6,028	6,384	6,335	6,494	6,455	6,885
Employment (persons)	no.	762	787	949	953	825	880
Room nights occupied	no.	84,416	69,743	107,372	125,611	84,595	78,984	382,121	396,562
Room occupancy rate	per cent	47.8	36.2	56.3	66.1	44.2	38.3	52.8	50.9
Guest nights	no.	150,164	122,109	198,706	239,625	152,014	137,175	696,764	727,520
Bed occupancy rate	per cent	27.4	20.8	34.1	41.0	25.9	21.7	31.1	30.5
Guest arrivals	no.	92,343	73,074	123,164	140,639	87,914	82,038	411,451	433,755
Average length of stay	days	1.6	1.7	1.6	1.7	1.7	1.7	1.7	1.7
Takings from accommodation	\$'000	5,686	4,578	7,614	9,360	5,878	5,442	25,874	28,295
TOTAL HOTELS, MOTELS AND GUEST HOUSES WITH FACILITIES									
Establishments	no.	180	188	187	189	197	212
Guest rooms	no.	5,523	5,604	5,604	5,611	5,637	5,763
Bed spaces	no.	16,043	16,201	16,195	16,227	16,278	16,697
Employment (persons)	no.	4,257	4,262	4,620	4,608	4,182	4,146
Room nights occupied	no.	234,295	199,362	282,767	317,498	224,353	209,297	1,059,650	1,033,915
Room occupancy rate	per cent	46.7	38.7	54.8	62.9	43.7	39.5	52.3	50.1
Guest nights	no.	392,941	324,307	489,348	574,911	377,660	345,714	1,822,252	1,787,633
Bed occupancy rate	per cent	27.0	21.8	32.8	39.4	25.5	22.5	31.1	30.0
Guest arrivals	no.	219,887	182,578	279,793	322,633	212,792	191,764	1,016,507	1,006,982
Average length of stay	days	1.8	1.8	1.7	1.8	1.8	1.8	1.8	1.8
Takings from accommodation	\$'000	17,815	14,362	22,556	25,850	17,695	16,727	80,534	82,827

TABLE 2 — SUMMARY OF CARAVAN PARKS, TASMANIA

Particulars	Unit	Quarter ended				Year ended			
		June 1996	September 1996	December 1996	March 1997	June 1997	September 1997	September 1996	September 1997
SHORT-TERM CARAVAN PARKS									
Establishments	no.	60	57	57	57	57	57
Capacity									
On-site vans	no.	235	235	229	230	226	220
Other powered sites	no.	2,941	2,839	2,872	2,898	2,833	2,798
Unpowered sites	no.	1,778	1,691	1,665	1,698	1,677	1,671
Cabins, etc.	no.	386	356	366	372	366	399
<i>Total capacity</i>	<i>no.</i>	<i>5,340</i>	<i>5,121</i>	<i>5,132</i>	<i>5,198</i>	<i>5,102</i>	<i>5,088</i>
Sites occupied by long-term guests	no.	227	202	189	196	188	206
Other sites permanently reserved	no.	1,053	1,072	1,074	1,084	1,085	1,096
Employment (persons)	no.	196	201	241	228	201	201
Site nights occupied	no.	151,778	140,470	163,816	214,418	150,629	143,830	672,848	672,693
Site occupancy rate	per cent	31.2	29.8	34.7	45.8	32.4	30.7	34.8	35.9
Takings from accommodation	\$'000	1,229	878	1,499	2,538	1,254	1,050	6,257	6,340
LONG-TERM CARAVAN PARKS									
Establishments	no.	13	16	16	16	16	16
Capacity									
On-site vans	no.	132	135	136	135	133	136
Other powered sites	no.	565	662	661	693	664	682
Unpowered sites	no.	350	438	437	409	453	429
Cabins, etc.	no.	92	135	134	133	138	140
<i>Total capacity</i>	<i>no.</i>	<i>1,139</i>	<i>1,370</i>	<i>1,368</i>	<i>1,370</i>	<i>1,388</i>	<i>1,387</i>
Sites occupied by long-term guests	no.	223	240	228	232	221	225
Other sites permanently reserved	no.	33	35	33	33	34	36
Employment (persons)	no.	48	63	64	66	57	59
Site nights occupied	no.	28,260	28,722	33,987	44,633	35,515	31,592	122,838	145,727
Site occupancy rate	per cent	27.3	22.8	27.0	36.2	28.1	24.8	28.0	29.0
Takings from accommodation	\$'000	346	331	484	661	466	364	1,575	1,975
TOTAL CARAVAN PARKS									
Establishments	no.	73	73	73	73	73	73
Capacity									
On-site vans	no.	367	370	365	365	359	356
Other powered sites	no.	3,506	3,501	3,533	3,591	3,497	3,480
Unpowered sites	no.	2,128	2,129	2,102	2,107	2,130	2,100
Cabins, etc.	no.	478	491	500	505	504	539
<i>Total capacity</i>	<i>no.</i>	<i>6,479</i>	<i>6,491</i>	<i>6,500</i>	<i>6,568</i>	<i>6,490</i>	<i>6,475</i>
Sites occupied by long-term guests	no.	450	442	417	428	409	431
Other sites permanently reserved	no.	1,086	1,107	1,107	1,117	1,119	1,132
Employment (persons)	no.	244	264	305	294	258	260
Site nights occupied	no.	180,038	169,192	197,803	259,051	186,144	175,422	795,686	818,420
Site occupancy rate	per cent	30.5	28.3	33.1	43.8	31.5	29.4	33.5	34.5
Takings from accommodation	\$'000	1,575	1,209	1,983	3,199	1,720	1,413	7,833	8,315

TABLE 3 — SUMMARY OF HOLIDAY FLATS, UNITS AND HOUSES, TASMANIA

Particulars	Unit	Quarter ended				Year ended			
		June 1996	September 1996	December 1996	March 1997	June 1997	September 1997	September 1996	September 1997
Letting entities	no.	55	57	57	57	58	62
Flats, units and houses									
Single bedroom	no.	241	240	240	241	257	262
Multiple bedroom	no.	605	618	621	621	619	654
Total flats, units and houses	no.	846	858	861	862	876	916
Bed spaces	no.	3,696	3,800	3,810	3,797	3,918	4,021
Employment (persons)	no.	307	322	341	349	319	328
Unit nights occupied	no.	33,371	28,000	41,935	50,798	34,543	31,260	150,234	158,536
Unit occupancy rate	per cent	43.3	35.5	52.9	65.5	43.3	37.1	48.8	49.4
Unit lettings	no.	16,116	13,426	20,950	24,189	16,312	13,455	73,074	74,906
Average length of stay	days	2.1	2.1	2.0	2.1	2.1	2.3	2.1	2.1
Takings from accommodation	\$'000	2,374	1,922	2,990	3,961	2,545	2,087	11,089	11,583

TABLE 4 — SUMMARY OF VISITOR HOSTELS, TASMANIA

Particulars	Unit	Quarter ended				Year ended			
		June 1996	September 1996	December 1996	March 1997	June 1997	September 1997	September 1996	September 1997
Establishments	no.	40	46	47	49	48	46
Bed spaces	no.	1,684	2,096	2,120	2,186	2,116	2,040
Employment (persons)	no.	105	130	143	156	139	126
Guest nights	no.	21,872	17,803	33,812	57,555	27,236	15,926	117,512	134,529
Bed occupancy rate	per cent	14.1	9.2	17.6	29.5	14.2	8.5	17.8	17.6
Guest arrivals	no.	13,386	11,743	22,296	36,215	15,922	10,153	76,390	84,586
Average length of stay	days	1.6	1.5	1.5	1.6	1.7	1.6	1.5	1.6
Takings from accommodation	\$'000	261	207	409	698	324	191	1,409	1,622

TABLE 5 — HOTELS, MOTELS AND GUEST HOUSES WITH FACILITIES BY STAR GRADING, TASMANIA

Particulars	Licensed hotels with facilities	Motels and guest houses	Star grading			Total
			1, 2 and Ungraded	3	4 and 5	
ESTABLISHMENTS, CAPACITY AND EMPLOYMENT						
<i>September quarter 1996</i>						
Establishments	92	96	66	84	38	188
Guest rooms	3,510	2,094	1,224	2,562	1,818	5,604
Bed spaces	9,817	6,384	3,425	7,632	5,144	16,201
Employment (persons)	3,475	787	834	1,282	2,146	4,262
<i>September quarter 1997</i>						
Establishments	97	115	75	81	56	212
Guest rooms	3,517	2,246	1,298	2,418	2,047	5,763
Bed spaces	9,812	6,885	3,597	7,263	5,837	16,697
Employment (persons)	3,266	880	871	1,134	2,141	4,146
ROOM NIGHTS OCCUPIED						
<i>September quarter 1996</i>	129,619	69,743	28,200	86,580	84,582	199,362
<i>1997—</i>						
July	39,239	23,587	10,055	23,270	29,501	62,826
August	42,178	24,619	10,862	24,453	31,482	66,797
September	48,896	30,778	12,394	32,141	35,139	79,674
<i>September quarter 1997</i>	130,313	78,984	33,311	79,864	96,122	209,297
ROOM OCCUPANCY RATES (per cent)						
<i>September quarter 1996</i>	40.1	36.2	25.0	36.7	50.6	38.7
<i>1997—</i>						
July	36.0	33.9	25.0	31.0	46.5	35.2
August	38.7	35.5	27.0	32.6	49.8	37.4
September	46.3	45.7	31.8	44.3	57.2	46.1
<i>September quarter 1997</i>	40.3	38.3	27.9	35.9	51.1	39.5
GUEST NIGHTS						
<i>September quarter 1996</i>	202,198	122,109	48,679	150,076	125,552	324,307
<i>1997—</i>						
July	60,081	39,488	16,640	39,019	43,910	99,569
August	66,197	41,895	18,012	41,040	49,040	108,092
September	82,261	55,792	21,975	58,614	57,464	138,053
<i>September quarter 1997</i>	208,539	137,175	56,627	138,673	150,414	345,744
BED OCCUPANCY RATES (per cent)						
<i>September quarter 1996</i>	22.4	20.8	15.4	21.4	26.5	21.8
<i>1997—</i>						
July	19.8	18.5	14.9	17.3	24.3	19.2
August	21.8	19.7	16.2	18.2	27.2	20.9
September	27.9	27.0	20.4	26.9	32.8	27.6
<i>September quarter 1997</i>	23.1	21.7	17.1	20.8	28.0	22.5
GUEST ARRIVALS						
<i>September quarter 1996</i>	109,504	73,074	28,489	89,480	64,609	182,578
<i>1997—</i>						
July	32,861	23,835	10,281	24,165	22,250	56,696
August	33,737	24,561	10,502	24,834	22,962	58,298
September	43,128	33,642	13,697	35,201	27,872	76,770
<i>September quarter 1997</i>	109,726	82,038	34,480	84,200	73,084	191,764
AVERAGE LENGTH OF STAY (days)						
<i>September quarter 1996</i>	1.8	1.7	1.7	1.7	1.9	1.8
<i>September quarter 1997</i>	1.9	1.7	1.6	1.6	2.1	1.8
TAKINGS FROM ACCOMMODATION (\$'000)						
<i>September quarter 1996</i>	9,784	4,578	1,694	5,321	7,348	14,362
<i>1997</i>						
July	3,335	1,627	619	1,456	2,888	4,962
August	3,649	1,675	676	1,501	3,147	5,323
September	4,301	2,140	777	2,067	3,598	6,442
<i>September quarter 1997</i>	11,285	5,442	2,072	5,023	9,633	16,727

TABLE 6—HOTELS, MOTELS AND GUEST HOUSES WITH FACILITIES BY ESTABLISHMENT SIZE, TASMANIA

Particulars	Establishment size (No. of rooms)						Total
	5-9	10-15	16-25	26-50	51-100	101+	
ESTABLISHMENTS, CAPACITY AND EMPLOYMENT							
<i>September quarter 1996—</i>							
Establishments	49	31	29	51	20	8	188
Guest rooms	347	356	600	1,764	1,290	1,247	5,604
Bed spaces	868	1,042	1,668	5,195	4,006	3,422	16,201
Employment (persons)	319	321	373	883	645	1,721	4,262
<i>September quarter 1997—</i>							
Establishments	66	36	31	51	20	8	212
Guest rooms	444	410	635	1,757	1,269	1,248	5,763
Bed spaces	1,137	1,185	1,830	5,262	3,917	3,366	16,697
Employment (persons)	352	340	374	860	636	1,584	4,146
ROOM NIGHTS OCCUPIED							
<i>September quarter 1996</i>	<i>9,348</i>	<i>10,610</i>	<i>17,583</i>	<i>60,347</i>	<i>42,868</i>	<i>58,606</i>	<i>199,362</i>
<i>1997</i>							
July	3,860	3,781	6,363	18,336	11,978	18,508	62,826
August	3,832	4,159	6,896	19,164	12,707	20,039	66,797
September	5,047	4,828	8,189	22,637	16,731	22,242	79,674
<i>September quarter 1997</i>	<i>12,739</i>	<i>12,768</i>	<i>21,448</i>	<i>60,137</i>	<i>41,416</i>	<i>60,789</i>	<i>209,297</i>
ROOM OCCUPANCY RATES (per cent)							
<i>September quarter 1996</i>	<i>29.3</i>	<i>32.4</i>	<i>31.9</i>	<i>37.2</i>	<i>36.1</i>	<i>51.1</i>	<i>38.7</i>
<i>1997—</i>							
July	28.0	29.7	32.3	33.7	30.4	47.8	35.2
August	28.2	32.7	35.0	35.2	32.5	51.8	37.4
September	37.9	39.3	43.0	42.9	43.9	59.4	46.1
<i>September quarter 1997</i>	<i>31.3</i>	<i>33.8</i>	<i>36.7</i>	<i>37.2</i>	<i>35.5</i>	<i>52.9</i>	<i>39.5</i>
GUEST NIGHTS							
<i>September quarter 1996</i>	<i>15,184</i>	<i>17,429</i>	<i>30,518</i>	<i>100,909</i>	<i>72,814</i>	<i>87,453</i>	<i>324,307</i>
<i>1997—</i>							
July	5,764	6,072	9,950	30,233	20,522	27,028	99,569
August	5,926	6,850	11,258	32,024	21,011	31,023	108,092
September	8,339	8,256	14,916	40,264	30,578	35,700	138,053
<i>September quarter 1997</i>	<i>20,029</i>	<i>21,178</i>	<i>36,124</i>	<i>102,521</i>	<i>72,111</i>	<i>93,751</i>	<i>345,714</i>
BED OCCUPANCY RATES (per cent)							
<i>September quarter 1996</i>	<i>19.0</i>	<i>18.2</i>	<i>19.9</i>	<i>21.1</i>	<i>19.8</i>	<i>27.8</i>	<i>21.8</i>
<i>1997</i>							
July	16.4	16.5	17.5	18.5	16.9	25.9	19.2
August	17.1	18.6	19.8	19.6	17.3	29.7	20.9
September	24.4	23.2	27.2	25.5	26.0	35.4	27.6
<i>September quarter 1997</i>	<i>19.2</i>	<i>19.4</i>	<i>21.5</i>	<i>21.2</i>	<i>20.0</i>	<i>30.3</i>	<i>22.5</i>
GUEST ARRIVALS							
<i>September quarter 1996</i>	<i>9,889</i>	<i>11,040</i>	<i>17,809</i>	<i>59,338</i>	<i>44,141</i>	<i>40,361</i>	<i>182,578</i>
<i>1997</i>							
July	3,831	3,678	5,974	18,707	12,035	12,471	56,696
August	3,795	4,080	6,639	19,006	11,884	12,894	58,298
September	5,281	4,983	9,376	24,374	17,761	14,995	76,770
<i>September quarter 1997</i>	<i>12,907</i>	<i>12,741</i>	<i>21,989</i>	<i>62,087</i>	<i>41,680</i>	<i>40,360</i>	<i>191,764</i>
AVERAGE LENGTH OF STAY (days)							
<i>September quarter 1996</i>	<i>1.5</i>	<i>1.6</i>	<i>1.7</i>	<i>1.7</i>	<i>1.6</i>	<i>2.2</i>	<i>1.8</i>
<i>September quarter 1997</i>	<i>1.6</i>	<i>1.7</i>	<i>1.6</i>	<i>1.7</i>	<i>1.7</i>	<i>2.3</i>	<i>1.8</i>
TAKINGS FROM ACCOMMODATION (\$'000)							
<i>September quarter 1996</i>	<i>540</i>	<i>589</i>	<i>962</i>	<i>3,752</i>	<i>3,402</i>	<i>5,116</i>	<i>14,362</i>
<i>1997—</i>							
July	240	190	367	1,187	1,087	1,892	4,962
August	244	220	399	1,214	1,142	2,105	5,323
September	319	259	499	1,479	1,499	2,386	6,442
<i>September quarter 1997</i>	<i>803</i>	<i>668</i>	<i>1,266</i>	<i>3,879</i>	<i>3,728</i>	<i>6,383</i>	<i>16,727</i>

TABLE 7—HOTELS, MOTELS AND GUEST HOUSES WITH FACILITIES BY STATISTICAL DIVISION,
TASMANIA

Particulars	Greater Hobart (SD)			Southern (SD)			Northern (SD)			Total
	Licensed hotels with facilities	Motels and guest houses	Total	Licensed hotels with facilities	Motels and guest houses	Total	Licensed hotels with facilities	Motels and guest houses	Total	
ESTABLISHMENTS, CAPACITY AND EMPLOYMENT										
<i>September quarter 1996—</i>										
Establishments	24	30	54	13	11	24	33	27	60	
Guest rooms	1,218	716	1,934	409	204	613	1,163	493	1,656	
Bed spaces	3,163	2,146	5,309	1,284	665	1,949	3,397	1,576	4,973	
Employment (persons)	1,525	268	1,793	242	77	319	1,207	151	1,358	
<i>September quarter 1997—</i>										
Establishments	24	38	62	15	11	26	36	32	68	
Guest rooms	1,222	767	1,989	413	202	615	1,154	538	1,692	
Bed spaces	3,161	2,373	5,534	1,290	667	1,957	3,387	1,719	5,106	
Employment (persons)	1,504	302	1,806	220	75	295	1,091	186	1,277	
ROOM NIGHTS OCCUPIED										
<i>September quarter 1996</i>	54,509	29,247	83,756	9,067	4,120	13,187	45,767	17,220	62,987	
<i>1997—</i>										
July	17,028	9,717	26,745	2,412	1,202	3,614	12,880	5,287	18,167	
August	19,095	10,111	29,206	2,565	1,190	3,755	13,763	5,895	19,658	
September	21,305	12,201	33,506	3,815	1,814	5,629	16,136	7,488	23,624	
<i>September quarter 1997</i>	57,428	32,029	89,457	8,792	4,206	12,998	42,779	18,670	61,449	
ROOM OCCUPANCY RATES (per cent)										
<i>September quarter 1996</i>	48.6	44.4	47.1	24.1	22.0	23.4	42.8	38.0	41.3	
<i>1997—</i>										
July	45.0	40.9	43.4	18.8	19.2	19.0	36.0	31.7	34.6	
August	50.4	42.5	47.4	20.0	19.0	19.7	38.5	35.7	37.6	
September	58.1	53.0	56.2	30.8	29.9	30.5	46.6	46.4	46.5	
<i>September quarter 1997</i>	51.1	45.4	48.9	23.1	22.6	23.0	40.3	37.9	39.5	
GUEST NIGHTS										
<i>September quarter 1996</i>	82,204	51,820	134,024	17,941	8,878	26,819	70,062	29,705	99,767	
<i>1997—</i>										
July	25,587	16,008	41,595	4,768	2,462	7,230	19,213	9,149	28,362	
August	27,675	16,928	44,603	4,745	2,256	7,001	23,713	10,187	33,900	
September	32,823	21,272	54,095	8,201	4,009	12,210	28,970	13,284	42,254	
<i>September quarter 1997</i>	86,085	54,208	140,293	17,714	8,727	26,441	71,896	32,620	104,516	
BED OCCUPANCY RATES (per cent)										
<i>September quarter 1996</i>	28.2	26.2	27.4	15.2	14.5	15.0	22.4	20.5	21.8	
<i>1997—</i>										
July	26.1	21.8	24.2	11.9	11.9	11.9	18.3	17.2	17.9	
August	28.2	23.0	26.0	11.9	10.9	11.5	22.6	19.3	21.5	
September	34.6	29.9	32.6	21.2	20.0	20.8	28.5	25.8	27.6	
<i>September quarter 1997</i>	29.6	24.8	27.6	14.9	14.2	14.7	23.1	20.7	22.3	
GUEST ARRIVALS										
<i>September quarter 1996</i>	37,204	29,136	66,340	13,543	5,978	19,521	37,804	18,735	56,539	
<i>1997—</i>										
July	11,580	8,539	20,119	3,657	1,721	5,378	11,238	6,216	17,454	
August	12,077	9,286	21,363	3,585	1,630	5,215	12,160	6,535	18,695	
September	13,970	10,926	24,896	6,047	2,744	8,791	15,648	8,337	23,985	
<i>September quarter 1997</i>	37,627	28,751	66,378	13,289	6,095	19,384	39,046	21,088	60,134	
AVERAGE LENGTH OF STAY (days)										
<i>September quarter 1996</i>	2.2	1.8	2.0	1.3	1.5	1.4	1.9	1.6	1.8	
<i>September quarter 1997</i>	2.3	1.9	2.1	1.3	1.4	1.4	1.8	1.5	1.7	
TAKINGS FROM ACCOMMODATION (\$'000)										
<i>September quarter 1996</i>	4,429	1,824	6,253	546	410	956	3,272	1,020	4,292	
<i>1997—</i>										
July	1,683	655	2,338	149	119	268	990	337	1,327	
August	1,956	688	2,644	147	121	268	1,046	351	1,397	
September	2,123	811	2,934	236	186	422	1,347	483	1,830	
<i>September quarter 1997</i>	5,763	2,154	7,917	532	426	958	3,382	1,171	4,554	

TABLE 7—HOTELS, MOTELS AND GUEST HOUSES WITH FACILITIES BY STATISTICAL DIVISION,
TASMANIA—continued

Particulars	Mersey-Lyell (SD)			Total Tasmania		East Coast (a)	
	Licensed hotels with facilities	Motels and guest houses	Total	Licensed hotels with facilities	Motels and guest houses	Total	Total
ESTABLISHMENTS, CAPACITY AND EMPLOYMENT							
September quarter 1996—							
Establishments	22	28	50	92	96	188	16
Guest rooms	720	681	1,401	3,510	2,094	5,604	512
Bed spaces	1,973	1,997	3,970	9,817	6,384	16,201	1,670
Employment (persons)	501	291	792	3,475	787	4,262	274
September quarter 1997—							
Establishments	22	34	56	97	115	212	19
Guest rooms	728	739	1,467	3,517	2,246	5,763	500
Bed spaces	1,974	2,126	4,100	9,812	6,885	16,697	1,655
Employment (persons)	451	317	768	3,266	880	4,146	261
ROOM NIGHTS OCCUPIED							
September quarter 1996	20,276	19,156	39,432	129,619	69,743	199,362	11,069
1997							
July	6,919	7,381	14,300	39,239	23,587	62,826	3,026
August	6,755	7,423	14,178	42,178	24,619	66,797	3,154
September	7,640	9,275	16,915	48,896	30,778	79,674	4,763
September quarter 1997	21,314	24,079	45,393	130,313	78,984	209,297	10,943
ROOM OCCUPANCY RATES (per cent)							
September quarter 1996	30.6	30.6	30.6	40.1	36.2	38.7	23.5
1997—							
July	30.7	32.2	31.4	36.0	33.9	35.2	19.5
August	29.9	32.4	31.2	38.7	35.5	37.4	20.3
September	35.0	41.8	38.4	46.3	45.7	46.1	31.8
September quarter 1997	31.8	35.4	33.6	40.3	38.3	39.5	23.8
GUEST NIGHTS							
September quarter 1996	31,991	31,706	63,697	202,198	122,109	324,307	22,087
1997—							
July	10,513	11,869	22,382	60,081	39,488	99,569	5,945
August	10,064	12,524	22,588	66,197	41,895	108,092	5,755
September	12,267	17,227	29,494	82,261	55,792	138,053	10,221
September quarter 1997	32,844	41,620	74,464	208,539	137,175	345,714	21,921
BED OCCUPANCY RATES (per cent)							
September quarter 1996	17.6	17.3	17.4	22.4	20.8	21.8	14.4
1997—							
July	17.2	18.0	17.6	19.8	18.5	19.2	11.6
August	16.4	19.0	17.8	21.8	19.7	20.9	11.2
September	20.7	27.0	24.0	27.9	27.0	27.6	20.6
September quarter 1997	18.1	21.3	19.7	23.1	21.7	22.5	14.4
GUEST ARRIVALS							
September quarter 1996	20,953	19,225	40,178	109,504	73,074	182,578	15,813
1997—							
July	6,386	7,359	13,745	32,861	23,835	56,696	4,309
August	5,915	7,110	13,025	33,737	24,561	58,298	4,193
September	7,463	11,635	19,098	43,128	33,642	76,770	7,020
September quarter 1997	19,764	26,104	45,868	109,726	82,038	191,764	15,522
AVERAGE LENGTH OF STAY (days)							
September quarter 1996	1.5	1.6	1.6	1.8	1.7	1.8	1.4
September quarter 1997	1.7	1.6	1.6	1.9	1.7	1.8	1.4
TAKINGS FROM ACCOMMODATION (\$'000)							
September quarter 1996	1,536	1,324	2,860	9,784	4,578	14,362	745
1997—							
July	513	516	1,028	3,335	1,627	4,962	216
August	500	515	1,015	3,649	1,675	5,323	217
September	595	660	1,256	4,301	2,140	6,442	350
September quarter 1997	1,608	1,691	3,299	11,285	5,442	16,727	783

(a) The East Coast Tourist Area comprises Glamorgan/Spring Bay (M) and Break O'Day (M).

TABLE 8—HOTELS, MOTELS AND GUEST HOUSES WITH FACILITIES: STATISTICAL DIVISIONS

Statistical Divisions and selected Statistical Local Areas	Establish- ments	Guest rooms	Bed spaces	Employ- ment (persons)	Room nights occupied				Room occupancy rates (per cent)			
					July	Aug.	Sept.	Sept. qtr	July	Aug.	Sept.	Sept. qtr
					Clarence (C)	6	64	178	93	512	546	779
Glenorchy (C)	8	172	465	105	1,724	1,958	2,375	6,057	32.3	36.7	46.0	38.3
Hobart (C)												
Inner	6	433	1,042	225	5,002	5,279	7,357	17,638	37.3	39.3	56.6	44.3
Remainder	35	1,234	3,606	1,334	19,000	20,981	22,340	62,321	49.7	54.8	60.3	54.9
Total	41	1,667	4,648	1,559	24,002	26,260	29,697	79,959	46.4	50.8	59.4	52.1
Balance	7	86	243	49	507	442	655	1,604	19.0	16.6	25.4	20.3
Greater Hobart (SD)	62	1,989	5,534	1,806	26,745	29,206	33,506	89,457	43.4	47.4	56.2	48.9
Glanorgan/Spring Bay (M)	13	342	1,232	179	2,294	2,338	3,621	8,253	21.6	22.1	35.3	26.2
Tasman (M)	5	130	387	69	704	881	1,287	2,872	17.5	21.9	33.0	24.0
Balance	8	143	338	47	616	536	721	1,873	13.9	12.1	16.8	14.2
Southern (SD)	26	615	1,957	295	3,614	3,755	5,629	12,998	19.0	19.7	30.5	23.0
Break O'Day (M)	6	158	423	82	732	816	1,142	2,690	14.9	16.7	24.1	18.5
Dorset (M)	4	44	181	41	789	768	875	2,432	57.8	56.3	66.3	60.1
Launceston (C)												
Inner	9	469	1,296	245	6,436	6,470	6,682	19,588	44.3	44.5	47.5	45.4
Parts B & C	25	631	2,058	317	6,126	7,149	9,109	22,384	31.3	36.5	48.1	38.6
Total	34	1,100	3,354	562	12,562	13,619	15,791	41,972	36.8	39.9	47.9	41.5
Northern Midlands (M)— Pts A & B	8	87	226	38	692	854	987	2,533	25.7	31.7	37.8	31.6
West Tamar (M)— Pts A & B	6	95	300	109	891	949	1,126	2,966	30.3	32.2	39.5	33.9
Balance	10	208	622	445	2,501	2,652	3,703	8,856	38.8	42.4	59.3	46.7
Northern (SD)	68	1,692	5,106	1,277	18,167	19,658	23,624	61,449	34.6	37.6	46.5	39.5
Burnie (C) — Pts A & B	9	247	608	115	2,406	2,493	3,037	7,936	31.4	32.6	41.0	34.9
Central Coast (M) — Pts A & B	6	120	298	87	1,210	1,578	1,139	3,927	32.5	42.4	31.6	35.6
Circular Head (M)	3	121	329	68	1,049	941	1,253	3,243	28.0	25.1	34.5	29.1
Devonport (C)	10	252	687	132	3,263	3,417	3,256	9,936	41.8	43.7	43.1	42.9
Waratah/Wynyard (M) — Pts A & B	7	117	311	55	907	722	1,221	2,850	25.0	19.9	34.8	26.5
West Coast (M)	11	406	1,144	175	2,596	2,568	3,940	9,104	20.6	20.4	32.3	24.4
Balance	10	204	723	136	2,869	2,459	3,069	8,397	45.4	38.9	50.1	44.7
Mersey-Lyell (SD)	56	1,467	4,100	768	14,300	14,178	16,915	45,393	31.4	31.2	38.4	33.6
Total Tasmania	212	5,763	16,697	4,146	62,826	66,797	79,674	209,297	35.2	37.4	46.1	39.5

AND SELECTED STATISTICAL LOCAL AREAS, TASMANIA, SEPTEMBER QUARTER 1997

<i>Guest nights</i>				<i>Guest arrivals</i>				<i>Takings from accommodation (\$'000)</i>			
<i>July</i>	<i>Aug.</i>	<i>Sept.</i>	<i>Sept. qtr</i>	<i>July</i>	<i>Aug.</i>	<i>Sept.</i>	<i>Sept. qtr</i>	<i>July</i>	<i>Aug.</i>	<i>Sept.</i>	<i>Sept. qtr</i>
895	970	1,598	3,463	548	637	973	2,158	32	40	54	126
2,656	3,101	4,135	9,892	1,607	1,962	2,147	5,716	83	91	116	290
7,846	7,745	11,179	26,770	3,921	3,891	5,348	13,160	368	392	557	1,317
29,341	31,964	35,957	97,262	13,493	14,292	15,624	43,409	1,829	2,092	2,171	6,092
37,187	39,709	47,136	124,032	17,414	18,183	20,972	56,569	2,197	2,485	2,728	7,409
857	823	1,226	2,906	550	581	804	1,935	27	29	37	93
41,595	44,603	54,095	140,293	20,119	21,363	24,896	66,378	2,338	2,644	2,934	7,917
4,728	4,408	8,126	17,262	3,445	3,315	5,652	12,412	180	182	295	657
1,453	1,651	2,743	5,847	1,277	1,320	2,283	4,880	49	59	89	197
1,049	942	1,341	3,332	656	580	856	2,092	40	27	37	104
7,230	7,001	12,210	26,441	5,378	5,215	8,791	19,384	268	268	422	958
1,217	1,347	2,095	4,659	864	878	1,368	3,110	36	35	55	126
962	916	1,042	2,920	648	646	738	2,032	36	28	45	109
8,965	11,422	12,009	32,396	5,441	5,437	6,615	17,493	526	523	627	1,676
10,919	12,972	17,082	40,973	7,037	7,964	10,069	25,070	409	467	619	1,494
19,884	24,394	29,091	73,369	12,478	13,401	16,684	42,563	935	989	1,246	3,171
1,197	1,443	1,666	4,306	1,047	1,119	1,247	3,413	46	53	63	161
1,364	1,420	1,949	4,733	842	838	1,194	2,874	45	51	62	159
3,738	4,380	6,411	14,529	1,575	1,813	2,754	6,142	230	241	358	828
28,362	33,900	42,254	104,516	17,454	18,695	23,985	60,134	1,327	1,397	1,830	4,554
2,897	3,267	3,904	10,068	1,965	2,108	2,213	6,286	167	171	212	551
1,655	2,438	1,759	5,852	1,156	1,206	1,283	3,645	60	74	56	190
1,528	1,460	2,044	5,032	1,114	1,105	1,649	3,868	60	57	75	192
4,694	5,203	5,054	14,951	2,994	2,914	3,386	9,294	223	241	228	692
1,392	1,173	2,214	4,779	918	784	1,526	3,228	49	41	71	161
4,262	4,135	7,853	16,250	2,483	2,229	5,301	10,013	149	147	266	562
5,954	4,912	6,666	17,532	3,115	2,679	3,740	9,534	320	284	348	952
22,382	22,588	29,494	74,464	13,745	13,025	19,098	45,868	1,028	1,015	1,256	3,299
99,569	108,092	138,053	345,714	56,696	58,298	76,770	191,764	4,962	5,323	6,442	16,727

TABLE 9— HOLIDAY FLATS, UNITS AND HOUSES BY STATISTICAL DIVISION AND SELECTED STATISTICAL AREAS, TASMANIA

Particulars	Northern (SD)				Total	Mersey-Lyell (SD)	Total Tasmania	East Coast (a)
	Greater Hobart (SD)	Southern (SD)	Greater Launceston and Central North (SSDs)	North Eastern (SSD)				
LETTING ENTITIES, CAPACITY AND EMPLOYMENT								
September quarter 1996—								
Letting entities	13	11	11	7	18	15	57	13
Flats, units and houses								
Single bedroom	50	21	89	28	117	52	240	39
Multiple bedroom	183	94	142	73	215	126	618	111
Total flats, units and houses	233	115	231	101	332	178	858	150
Bed spaces	1,041	577	913	474	1,387	795	3,800	704
Employment (persons)	61	47	138	22	160	54	322	48
September quarter 1997—								
Letting entities	14	12	11	8	19	17	62	14
Flats, units and houses								
Single bedroom	49	24	102	32	134	55	262	43
Multiple bedroom	205	95	149	75	224	130	654	113
Total flats, units and houses	254	119	251	107	358	185	916	156
Bed spaces	1,109	590	972	494	1,466	856	4,021	725
Employment (persons)	63	51	141	25	166	48	328	53
UNIT NIGHTS OCCUPIED								
September quarter 1996	10,258	3,426	7,699	1,421	9,120	5,196	28,000	2,997
1997—								
July	3,526	888	2,080	510	2,590	1,667	8,671	930
August	3,904	913	2,240	542	2,782	1,986	9,585	964
September	5,050	1,460	3,116	778	3,894	2,600	13,004	1,468
September quarter 1997	12,480	3,261	7,436	1,830	9,266	6,253	31,260	3,362
UNIT OCCUPANCY RATES (per cent)								
September quarter 1996	47.9	32.4	36.2	15.3	29.9	31.7	35.5	21.7
1997—								
July	44.8	24.1	26.7	15.4	23.3	29.1	30.5	19.2
August	49.6	24.7	28.8	16.3	25.1	34.6	33.8	19.9
September	66.3	40.9	41.4	24.2	36.3	46.8	47.3	31.4
September quarter 1997	53.4	29.8	32.2	18.6	28.1	36.7	37.1	23.4
UNIT LETTINGS								
September quarter 1996	3,437	2,450	4,303	749	5,052	2,487	13,426	1,984
1997—								
July	1,104	633	1,065	275	1,340	667	3,744	597
August	1,185	622	1,182	263	1,445	772	4,024	594
September	1,647	1,015	1,497	378	1,875	1,150	5,687	944
September quarter 1997	3,936	2,270	3,744	916	4,660	2,589	13,455	2,135
AVERAGE LENGTH OF STAY (days)								
September quarter 1996	3.0	1.4	1.8	1.9	1.8	2.1	2.1	1.5
1997								
July	3.2	1.4	2.0	1.9	1.9	2.5	2.3	1.6
August	3.3	1.5	1.9	2.1	1.9	2.6	2.4	1.6
September	3.1	1.4	2.1	2.1	2.1	2.3	2.3	1.6
September quarter 1997	3.2	1.4	2.0	2.0	2.0	2.4	2.3	1.6
TAKINGS FROM ACCOMMODATION (\$'000)								
September quarter 1996	663	253	645	83	728	278	1,922	211
1997—								
July	226	71	173	27	201	87	584	69
August	241	65	192	28	220	103	630	63
September	326	117	255	44	298	131	873	106
September quarter 1997	793	253	620	99	719	321	2,087	237

(a) The East Coast Tourist Area comprises Glamorgan/Spring Bay (M) and Break O' Day (M).

TABLE 10 — CARAVAN PARKS BY STATISTICAL DIVISION AND SELECTED STATISTICAL AREAS, TASMANIA

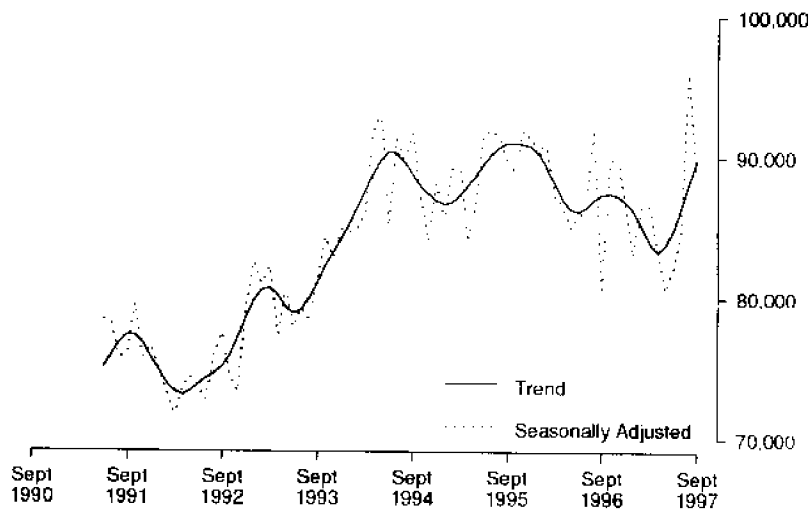
Particulars	Northern (SD)					Total	Mersey-Lyell (SD)	Total Tasmania	East Coast (a)
	Greater Hobart (SD)	Southern (SD)	Greater Launceston and Central North (SSDs)	North Eastern (SSD)					
ESTABLISHMENTS, CAPACITY AND EMPLOYMENT									
<i>September quarter 1996—</i>									
Establishments	7	18	12	8	20	28	73	11	
Capacity									
On-site vans	74	64	50	23	73	159	370	52	
Other powered sites	244	803	483	507	990	1,464	3,501	662	
Unpowered sites	258	355	317	554	871	645	2,129	511	
Cabins, flats, etc.	65	146	79	20	99	181	491	87	
<i>Total capacity</i>	<i>641</i>	<i>1,368</i>	<i>929</i>	<i>1,104</i>	<i>2,033</i>	<i>2,449</i>	<i>6,491</i>	<i>1,312</i>	
Sites occupied by long-term guests	67	19	75	14	89	267	442	28	
Other sites permanently reserved	7	343	105	312	417	340	1,107	372	
Employment (persons)	34	72	42	25	67	91	264	48	
<i>September quarter 1997—</i>									
Establishments	7	18	12	8	20	28	73	11	
Capacity									
On-site vans	62	62	50	13	63	169	356	45	
Other powered sites	261	761	467	528	995	1,463	3,480	649	
Unpowered sites	257	363	312	538	850	630	2,100	513	
Cabins, flats, etc.	67	164	92	21	113	195	539	104	
<i>Total capacity</i>	<i>647</i>	<i>1,350</i>	<i>921</i>	<i>1,100</i>	<i>2,021</i>	<i>2,457</i>	<i>6,475</i>	<i>1,311</i>	
Sites occupied by long-term guests	62	19	74	15	89	261	431	26	
Other sites permanently reserved	5	386	106	293	399	342	1,132	398	
Employment (persons)	35	76	40	23	63	86	260	50	
SITE NIGHTS OCCUPIED									
<i>September quarter 1996</i>	<i>11,120</i>	<i>36,488</i>	<i>23,301</i>	<i>32,201</i>	<i>55,502</i>	<i>66,082</i>	<i>169,192</i>	<i>40,433</i>	
<i>1997—</i>									
July	3,467	13,798	6,967	9,997	16,964	22,303	56,532	14,336	
August	4,256	13,649	7,047	10,028	17,075	22,514	57,494	14,094	
September	4,518	15,048	7,986	10,391	18,377	23,453	61,396	15,404	
<i>September quarter 1997</i>	<i>12,241</i>	<i>42,495</i>	<i>22,000</i>	<i>30,416</i>	<i>52,416</i>	<i>68,270</i>	<i>175,422</i>	<i>43,834</i>	
SITE OCCUPANCY RATES (per cent)									
<i>September quarter 1996</i>	<i>18.9</i>	<i>29.0</i>	<i>27.3</i>	<i>31.7</i>	<i>29.7</i>	<i>29.3</i>	<i>28.3</i>	<i>33.5</i>	
<i>1997—</i>									
July	17.3	33.0	24.4	29.3	27.1	29.3	28.2	35.3	
August	21.2	32.6	24.7	29.4	27.3	29.6	28.6	34.7	
September	23.3	37.2	28.9	31.5	30.3	31.8	31.6	39.2	
<i>September quarter 1997</i>	<i>20.6</i>	<i>34.2</i>	<i>26.0</i>	<i>30.1</i>	<i>28.2</i>	<i>30.2</i>	<i>29.4</i>	<i>36.3</i>	
TAKINGS FROM ACCOMMODATION (\$'000)									
<i>September quarter 1996</i>	<i>190</i>	<i>261</i>	<i>213</i>	<i>74</i>	<i>286</i>	<i>472</i>	<i>1,209</i>	<i>221</i>	
<i>1997—</i>									
July	66	83	52	16	68	165	381	63	
August	77	78	62	18	79	173	407	59	
September	87	189	81	27	108	242	625	161	
<i>September quarter 1997</i>	<i>230</i>	<i>349</i>	<i>194</i>	<i>61</i>	<i>255</i>	<i>580</i>	<i>1,413</i>	<i>283</i>	

(a) The East Coast Tourist Area comprises Glamorgan/Spring Bay (M) and Break O'Day (M).

TABLE 11—HOTEL & MOTEL ETC. ROOM NIGHTS, HOLIDAY UNIT NIGHTS AND CARAVAN PARK SITE NIGHTS: SEASONALLY ADJUSTED AND TREND ESTIMATES

Period	Hotel, motel etc. with facilities, room nights		Holiday unit nights		Caravan park site nights	
	Seasonally adjusted	Trend	Seasonally adjusted	Trend	Seasonally adjusted	Trend
	1995—October	88,939	91,008	12,289	12,752	64,892
November	91,897	90,909	13,180	12,824	64,947	65,652
December	91,259	90,743	13,263	12,813	66,968	66,034
1996—January	90,688	90,279	12,380	12,739	65,767	66,214
February	90,741	89,251	12,394	12,627	65,548	66,196
March	87,154	88,102	12,186	12,506	69,279	66,109
April	86,691	87,063	13,376	12,387	63,922	66,093
May	84,991	86,355	11,831	12,272	64,597	66,164
June	85,860	86,166	12,114	12,210	67,213	66,383
July	86,313	86,485	12,325	12,234	67,008	66,683
August	92,046	87,011	12,152	12,376	67,818	66,882
September	80,485	87,376	12,305	12,632	66,661	66,878
October	89,691	87,436	13,076	12,909	66,305	66,643
November	90,116	87,283	13,557	13,141	67,052	66,418
December	86,558	86,898	13,546	13,301	66,118	66,635
1997—January	83,065	86,237	13,061	13,372	65,852	67,314
February	86,499	85,102	13,025	13,278	67,778	68,179
March	86,566	83,925	13,021	13,107	69,687	68,898
April	83,410	83,327	14,017	12,984	71,946	69,297
May	80,582	83,785	12,897	12,980	69,297	69,415
June	82,246	84,909	11,552	13,078	67,804	69,389
July	84,811	86,469	12,937	13,244	68,295	69,432
August	96,081	88,159	15,224	13,451	69,455	69,620
September	88,330	89,835	13,278	13,651	71,939	69,852

HOTEL/MOTEL ROOM NIGHTS



HOLIDAY UNIT NIGHTS

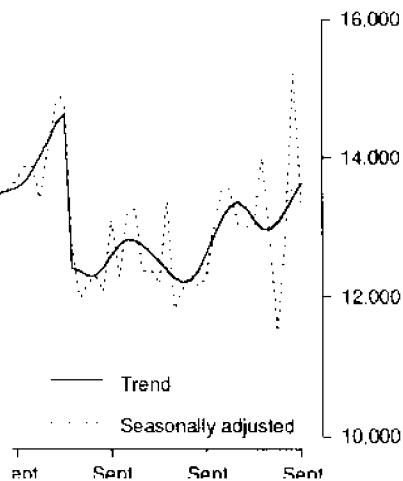


TABLE 12 — VISITOR HOSTELS BY STATISTICAL DIVISION, TASMANIA

<i>Particulars</i>	<i>Greater Hobart (SD)</i>	<i>Southern (SD)</i>	<i>Northern (SD)</i>	<i>Mersey-Lyell (SD)</i>	<i>Total Tasmania</i>
ESTABLISHMENTS, CAPACITY AND EMPLOYMENT					
<i>September quarter 1996</i>					
Establishments	8	17	12	9	46
Bed spaces	472	570	406	648	2,096
Employment (persons)	50	33	24	23	130
<i>September quarter 1997</i>					
Establishments	7	17	13	9	46
Bed spaces	447	560	433	600	2,040
Employment (persons)	35	43	23	25	126
GUEST NIGHTS					
<i>September quarter 1996</i>	<i>6,180</i>	<i>4,892</i>	<i>2,686</i>	<i>4,045</i>	<i>17,803</i>
<i>1997</i>					
July	1,395	1,272	558	1,098	4,323
August	1,621	980	934	1,233	4,768
September	2,112	1,894	1,170	1,659	6,835
<i>September quarter 1997</i>	<i>5,128</i>	<i>4,146</i>	<i>2,662</i>	<i>3,990</i>	<i>15,926</i>
BED OCCUPANCY RATES (per cent)					
<i>September quarter 1996</i>	<i>14.2</i>	<i>9.3</i>	<i>7.2</i>	<i>6.8</i>	<i>9.2</i>
<i>1997</i>					
July	10.1	7.7	4.2	5.9	6.9
August	11.7	5.6	7.0	6.6	7.5
September	15.7	11.3	9.0	9.2	11.2
<i>September quarter 1997</i>	<i>12.5</i>	<i>8.2</i>	<i>6.7</i>	<i>7.2</i>	<i>8.5</i>
GUEST ARRIVALS					
<i>September quarter 1996</i>	<i>3,652</i>	<i>3,447</i>	<i>1,755</i>	<i>2,889</i>	<i>11,743</i>
<i>1997</i>					
July	752	788	323	794	2,657
August	1,032	670	578	975	3,255
September	1,152	1,111	762	1,216	4,241
<i>September quarter 1997</i>	<i>2,936</i>	<i>2,569</i>	<i>1,663</i>	<i>2,985</i>	<i>10,153</i>
AVERAGE LENGTH OF STAY (days)					
<i>September quarter 1996</i>	<i>1.7</i>	<i>1.4</i>	<i>1.5</i>	<i>1.4</i>	<i>1.5</i>
<i>1997</i>					
July	1.9	1.6	1.7	1.4	1.6
August	1.6	1.5	1.6	1.3	1.5
September	1.8	1.7	1.5	1.4	1.6
<i>September quarter 1997</i>	<i>1.7</i>	<i>1.6</i>	<i>1.6</i>	<i>1.3</i>	<i>1.6</i>
TAKINGS FROM ACCOMMODATION (\$'000)					
<i>September quarter 1996</i>	<i>75</i>	<i>60</i>	<i>29</i>	<i>43</i>	<i>207</i>
<i>1997</i>					
July	18	14	7	12	50
August	22	12	11	15	61
September	28	20	14	18	79
<i>September quarter 1997</i>	<i>68</i>	<i>46</i>	<i>32</i>	<i>45</i>	<i>191</i>

EXPLANATORY NOTES

INTRODUCTION

1 This publication contains data for Tasmania from a quarterly survey of tourist accommodation establishments.

SCOPE

2 Tourist accommodation establishments currently included in the survey comprise two groups:

- Establishments which provide predominantly short-term accommodation (i.e. for periods of less than 2 months) to the general public. These include:
 - *Hotels, motels and guest houses, with facilities* being hotels licensed to operate a public bar and motels, private hotels and guest houses all of which provide a bath (or shower) and toilet in most guest rooms and have breakfast available for guests. NOTE: From December quarter 1993, hotel, motel and guest house establishments with fewer than five rooms have been formally excluded from the scope of this statistical collection.
 - *Holiday flats, units and houses* (excluding establishments predominantly operated on a time share basis) which are operated by owners, managers or real estate agents who have sole letting rights to at least five flats, units or houses for short-term letting. They are mainly self-contained in terms of cooking, bath (or shower) and toilet facilities and do not have breakfast available for guests. Data for holiday flats, units and houses include short-term owner occupation as well as paying guest occupation.
 - *Visitor hostels* which provide accommodation to visitors on a bed basis (rather than by the room). This category does not include establishments providing charity type accommodation (e.g. Salvation Army hostels) nor hotels, motels and guest houses without in-room facilities which provide accommodation on a per room basis.
 - *Caravan parks* which provide either predominantly short-term (i.e. for periods of less than 2 months) or predominantly long-term (i.e. for periods of 2 months or more) accommodation to the general public and which provide powered sites for caravans and toilet, shower and laundry facilities for guests.

3 Data collected and published for each type of establishment (other than holiday flats, units and houses) include both long-term and short-term guests at these establishments.

4 Establishments which provide more than one type of accommodation (e.g. a motel with attached caravan park) are treated as two or more separate establishments. However, self-contained units, flats, cabins, etc. attached to hotels, motels or to caravan parks are included in the capacity for those establishments and not treated as separate holiday flat, unit or house establishments.

AUSTRALIAN STANDARD GEOGRAPHICAL CLASSIFICATION

5 Statistics presented in this publication have been classified according to the Australian Standard Geographical Classification (ASGC), Edition 1996. This classification incorporates a number of hierarchic structures of geographic areas. The appropriate spatial units of the main structure of the ASGC used in this publication are defined as follows.

- Statistical Local Areas (SLAs) are legal Local Government Areas or parts thereof, which serve as the smallest type of spatial unit considered appropriate for the presentation of statistics and which add, without gaps or overlaps, to;
- Statistical Subdivisions (SSDs) which in turn represent another, higher hierarchic level and add, without gaps or overlaps, to;
- Statistical Divisions (SDs) which in turn add, without gaps or overlaps, to:
Total Tasmania.

For more detailed information, refer to the ASGC (1216.0).

EXPLANATORY NOTES

UNPUBLISHED STATISTICS

6 The ABS may make available on request certain unpublished tourist accommodation statistics. A charge may be made for this information.

RELATED PUBLICATIONS

7 Publications for Australia, and each State and Territory, are released by the respective offices of the ABS. Tourist accommodation statistics for past quarters are available on request. Other ABS publications which may be of interest include:

- *Directory of Tourism Statistics* (1130.0) (irregular: latest issue; 1997)
- *Overseas Arrivals and Departures, Australia* (3401.0) (issued monthly)
- *Tourism Indicators, Australia* (8634.0) (issued quarterly)
- *Tourism Accommodation, Australia* (8635.0) (issued quarterly)

8 Current publications produced by the ABS are listed in the *Catalogue of Publications and Products* (1101.0). The ABS also issues the *Release Advice* (1105.0) on Tuesdays and Fridays which lists publications to be released in the next few days. Both the *Catalogue* and *Release Advice* are available from any ABS office.

EFFECTS OF ROUNDING

9 Where figures have been rounded, discrepancies may occur between totals and the sums of the component items.

SYMBOLS AND OTHER USAGES

- .. not applicable
- nil or rounded to zero
- break in continuity of the series (where drawn across a column between two consecutive figures)
- n.a. not available
- n.p. not available for publication but included in totals where applicable
- r revised
- (C) City
- (M) Municipality

G L O S S A R Y

Average length of stay	Average length of stay is expressed in numbers of days and calculated: <ul style="list-style-type: none"> ▪ for hotels, motels and guest houses, by dividing <i>Guest nights</i> by <i>Guest arrivals</i> and ▪ for holiday flats, units and houses, by dividing <i>Unit nights occupied</i> by <i>Unit lettings</i>.
Bed spaces	Three-quarter beds are counted as one bed space; double beds as two bed spaces. Cots are excluded.
Capacity	Capacity in terms of <i>Guest rooms</i> , <i>Bed spaces</i> , <i>Holiday units</i> or <i>Caravan park sites</i> , etc. is the maximum number available to accommodate paying guests during the survey period. Capacity closed temporarily for seasonal reasons is included.
Caravan park capacity	The total number of <i>On-site vans</i> , <i>Other powered sites</i> , <i>Unpowered sites</i> and <i>Cabins</i> , etc.
Employment	The number of persons working at accommodation establishments at the end of the survey period (including working proprietors and those working on other than accommodation activities).
Establishments	For hotels, motels and guest houses, caravan parks and visitor hostels, the number of establishments within the scope of the survey which operated for any part of the survey period, or which closed temporarily for the quarter for seasonal reasons.
Guest arrivals	The total number of paying guests counted only on the first night they stayed at the accommodation establishment.
Letting entities	For holiday flats, units and houses, the number of owners, managers or real estate agents within the scope of the survey who operated for any part of the survey period.
Occupancy	Occupancy in terms of <i>Room nights</i> , <i>Unit nights</i> or <i>Site nights occupied</i> refers to the total number of nights each guest room, holiday unit or caravan park site, etc. was occupied during the survey period. NOTE: From September quarter 1992, caravan park sites, etc. permanently reserved for 2 months or more at the end of the survey period but only casually occupied by their tenants have been recorded continuously as <i>Site nights occupied</i> irrespective of whether the tenants of individual sites were in residence on any particular night. Occupancy in terms of <i>Guest nights</i> refers to the total number of nights each paying guest stayed during the survey period.
Occupancy rates	<i>Occupancy rates</i> represent occupancy expressed as a percentage of total capacity available during the survey period, e.g.

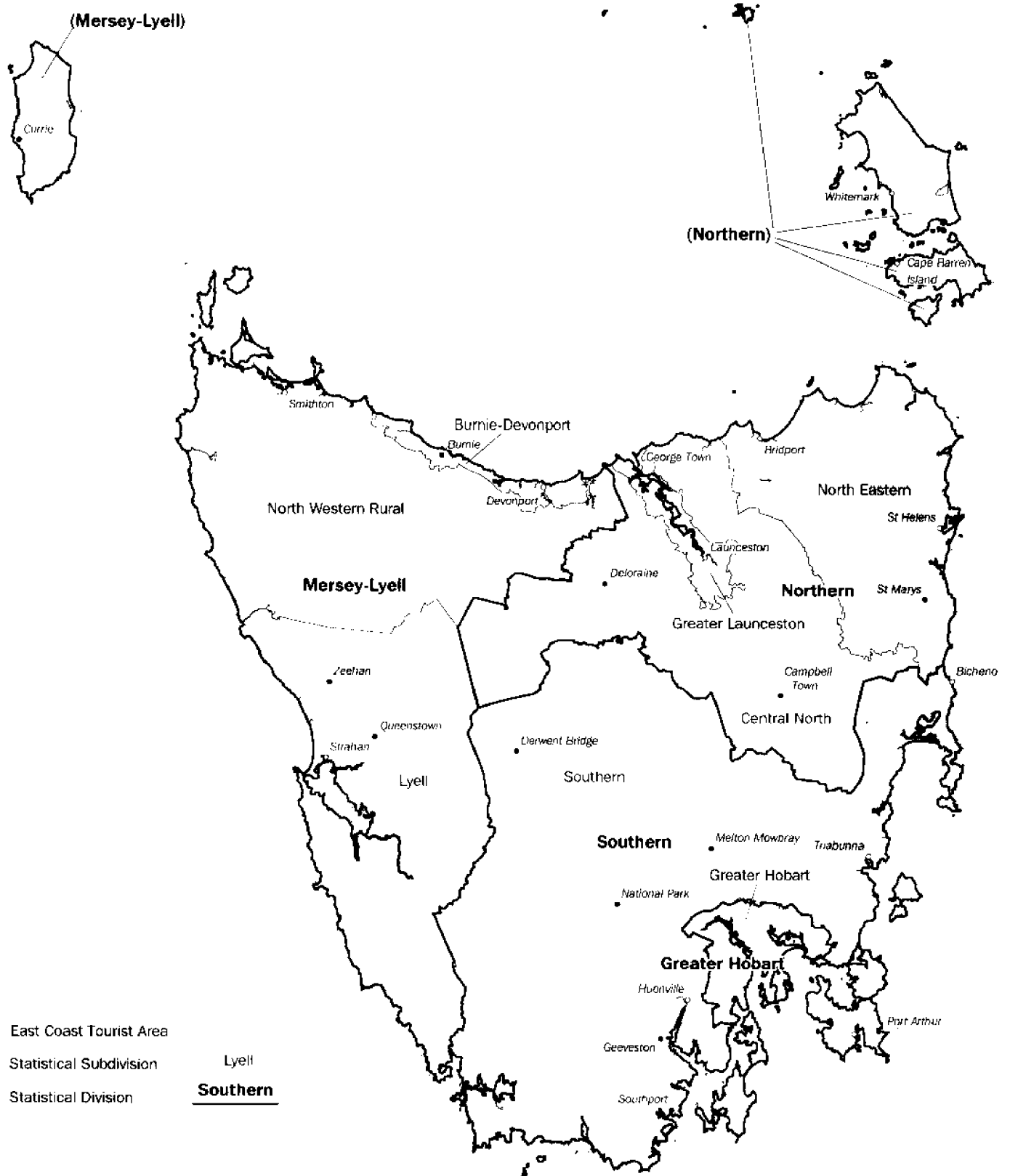
$$\text{Room occupancy rate (\%)} \text{ for the period} = \frac{\text{Room nights occupied}}{(\text{Guest rooms}) \times (\text{No. of days in the period})} \times 100$$

providing that, for establishments closing (other than for seasonal reasons) or opening during the survey period, the denominator of the above expression includes only operating periods.

GLOSSARY

Other sites permanently reserved	The total number of powered and unpowered sites, on-site vans and cabins, etc. continuously let for 2 months or more by the end of the survey period to tenants who occupy the sites only on a casual or sporadic basis. Separate data for this item are available only from September quarter 1992.
Room nights available	The number of guest rooms available multiplied by the number of days for which they were available during the survey period. For establishments closing (other than for seasonal reasons) or opening during the survey period, operating periods only are included.
Sites occupied by long-term guests	The total number of sites, etc. occupied at the end of the survey period by guests who have stayed continuously for 2 months or more.
Star grading	The grading of hotels and motels with facilities based on the classification system used by members of the Australian Automobile Association (AAA). The gradings are allocated according to a points system based on the amenities and facilities available to guests. Details of the grading scheme are contained in the RACV-RAASA members' publication <i>Accommodation Australia</i> , or the individual tour guides produced by members of the AAA. For the purpose of classifying establishments to a star grading in this publication, 'half' star gradings are ignored (e.g. a two and a half star grading has been shown as two star).
Takings from accommodation	Revenue received from the provision of accommodation. Takings from meals are excluded. Takings from accommodation for each month generally represent the takings received during that month. Where payments are received in advance of, or after, the provision of accommodation to guests, the monthly figure for takings from accommodation may not necessarily bear a direct relationship to the number of guests accommodated during the month. Rental and storage fees paid to caravan parks for the keeping of private vans in parks are included in the takings of the month they are received.
Unit lettings	The total number of times a holiday flat, unit or house was occupied by a new tenant, counted only on the first night it was occupied by the new tenant.

Statistical Divisions and Statistical Subdivisions, Tasmania, 1996



FOR MORE INFORMATION

The ABS publishes a wide range of information on Australia's economic and social conditions. A catalogue of publications and products is available from any of our offices (see below).

INFORMATION CONSULTANCY SERVICES

Information tailored to special needs of clients can be obtained from the Information Consultancy Service available at ABS Offices (see below).

ABS PRODUCTS

A large number of ABS products is available from the ABS Bookshops (see below). The ABS also provides a subscription service – you can telephone the ABS Subscription Service Australia wide toll free on 1300 3663 23.

ELECTRONIC SERVICES

A large range of data is available via on-line services, diskette, magnetic tape, tape cartridge and CD ROM. For more details about our electronic data services, contact any ABS office (see below) or e-mail us at:

* client.services@abs.gov.au

GENERAL SALES AND INQUIRIES

* Sydney 02 9268 4611 * Adelaide 08 8237 7100
* Melbourne 03 9615 7755 * Hobart 03 6222 5800
* Brisbane 07 3222 6351 * Darwin 08 8943 2111
* Perth 08 9360 5140 * Canberra 02 6252 6627

■ Information Services, ABS
PO Box 10, Belconnen ACT 2616



2863560009979
ISSN 0312-6900

RRP \$16.50